

State of the State Survey Summer 2017

Charles L. Ballard

Professor, Department of Economics

Director, State of the State Survey

Institute for Public Policy and Social Research

ballard@msu.edu

517.353.2961

State of the State Survey Summer 2017

**Michigan Residents Give
Thumbs Up to Economy,
Thumbs Down to Elected Leaders**

About SOSS Wave 74

954 Interviews Completed
April 19, 2017 – July 30, 2017
Margin of Error: $\pm 3.17\%$

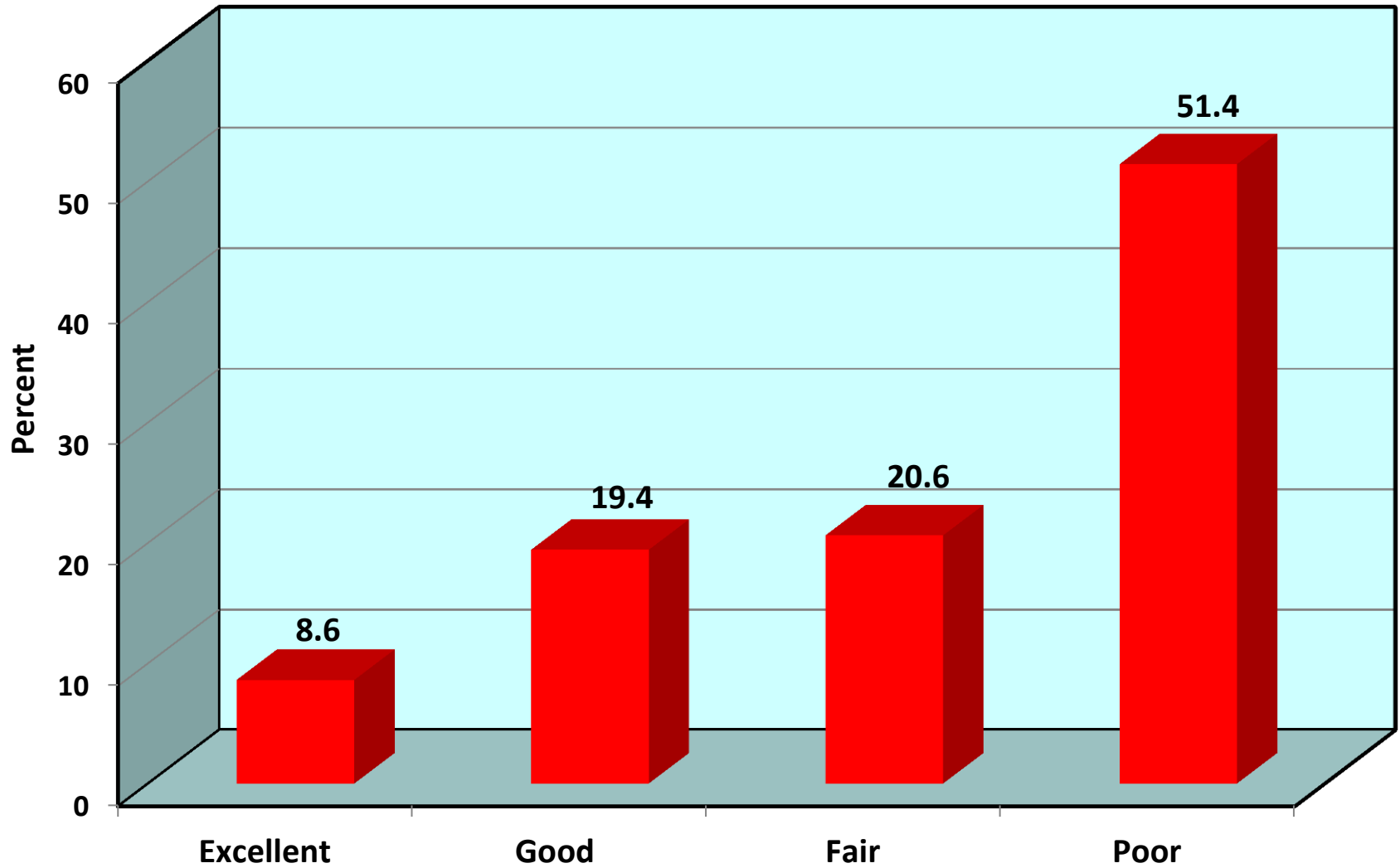
Male: 48.4% Female: 51.6%

White: 75.5% Black: 13.4%

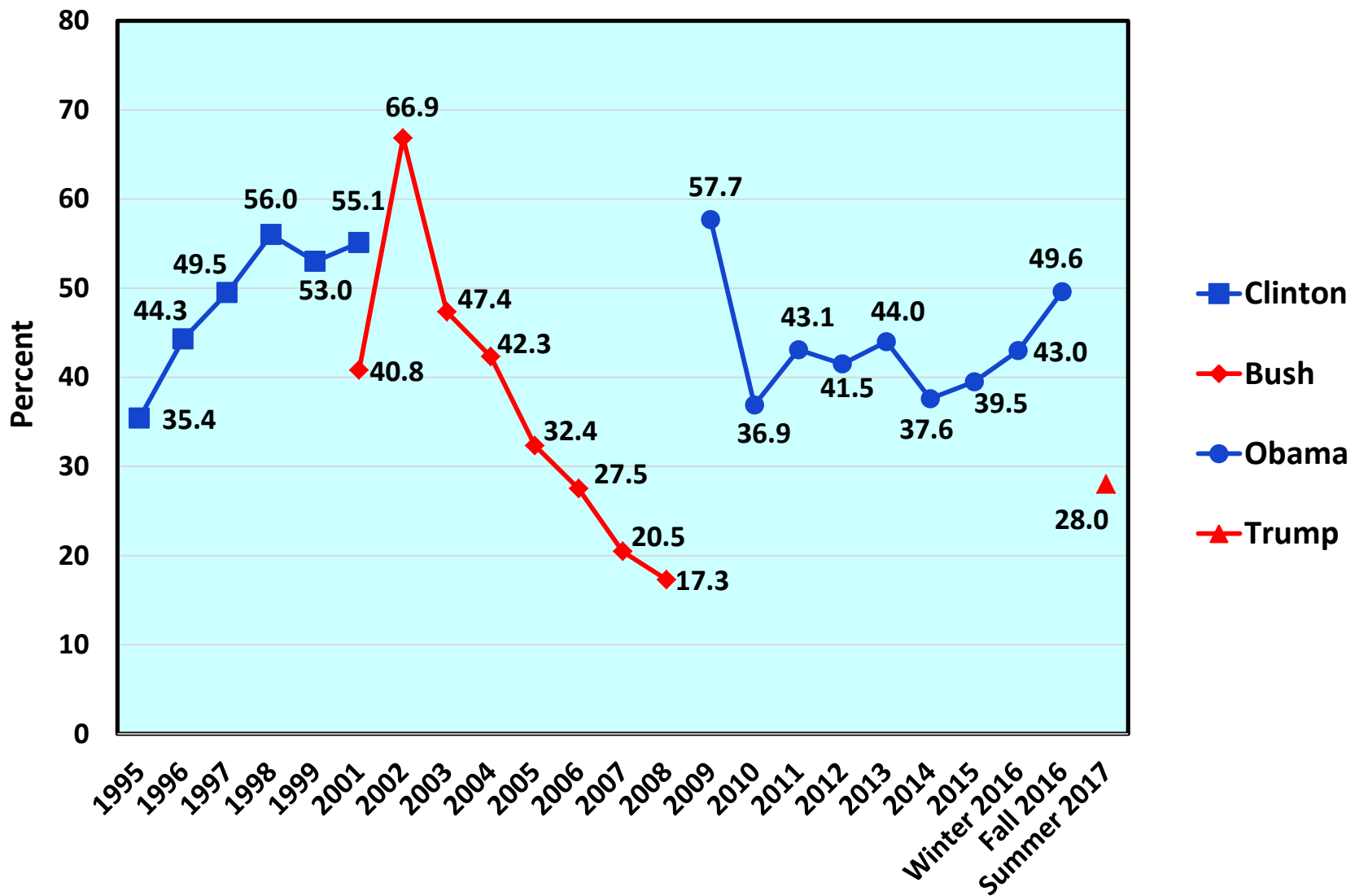
President Trump received a rating of “excellent” or “good” from 28% of Michigan residents.

That’s lower than Clinton or Obama ever received, but higher than George W. Bush received in his last two years in office.

Michigan Residents' Ratings of President Trump's Performance, Summer 2017



Percentage of Michigan Residents Rating U.S. President's Performance as "Excellent" or "Good," 1995-2017



We asked about President Trump's ban on travel from six Muslim-majority countries:

Response	Percentage
Strongly approve	21.0
Somewhat approve	20.3
Somewhat disapprove	16.6
Strong disapprove	40.4

**Opinion of the
Travel Ban:**

**Percent
Rating Trump
“Excellent” or
“Good”**

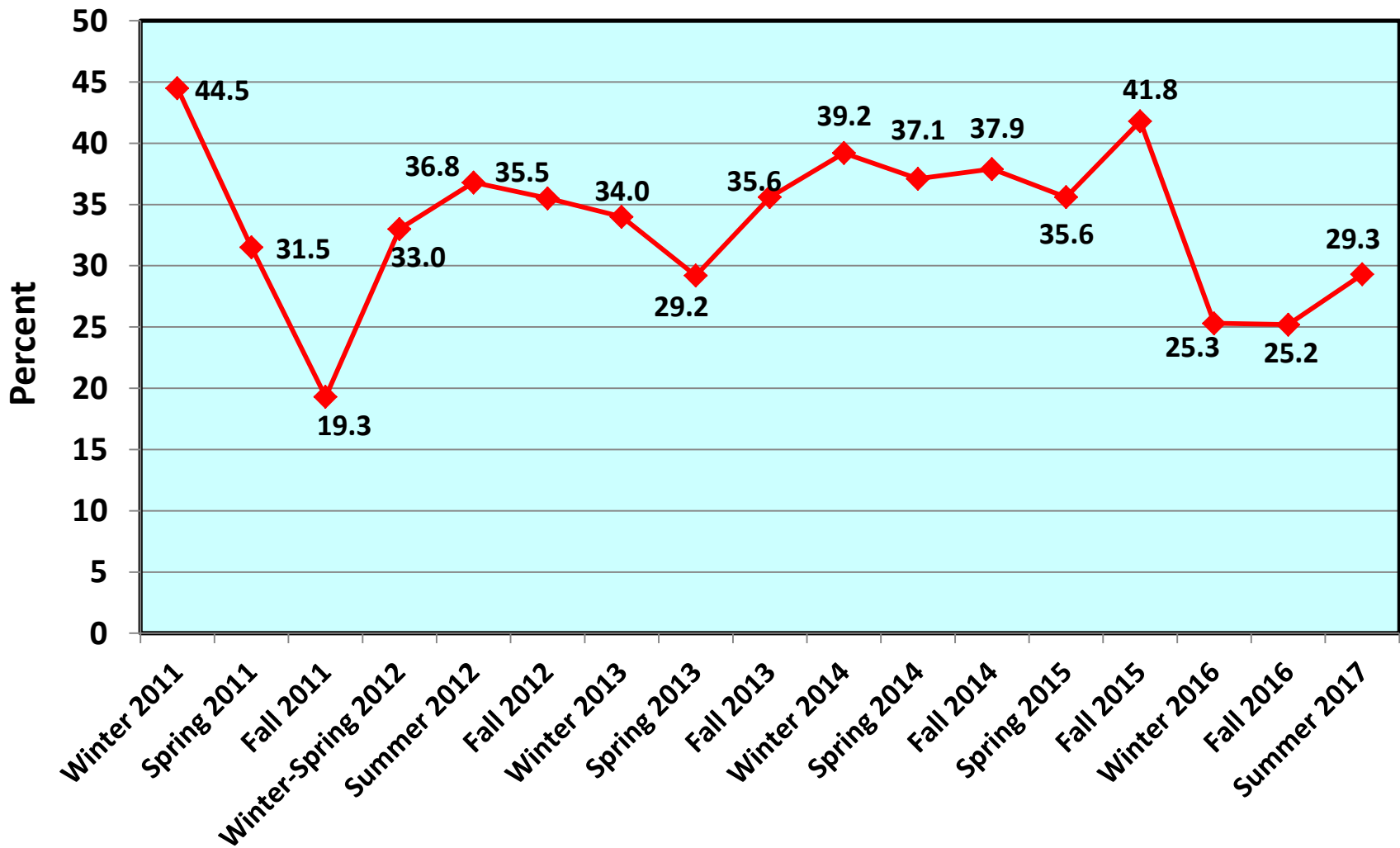
Strongly Approve	76.1
Somewhat Approve	38.7
Somewhat Disapprove	35.6
Strongly Disapprove	17.1

Governor Snyder's approval ratings improved slightly, but his favorable ratings remained below 30%.

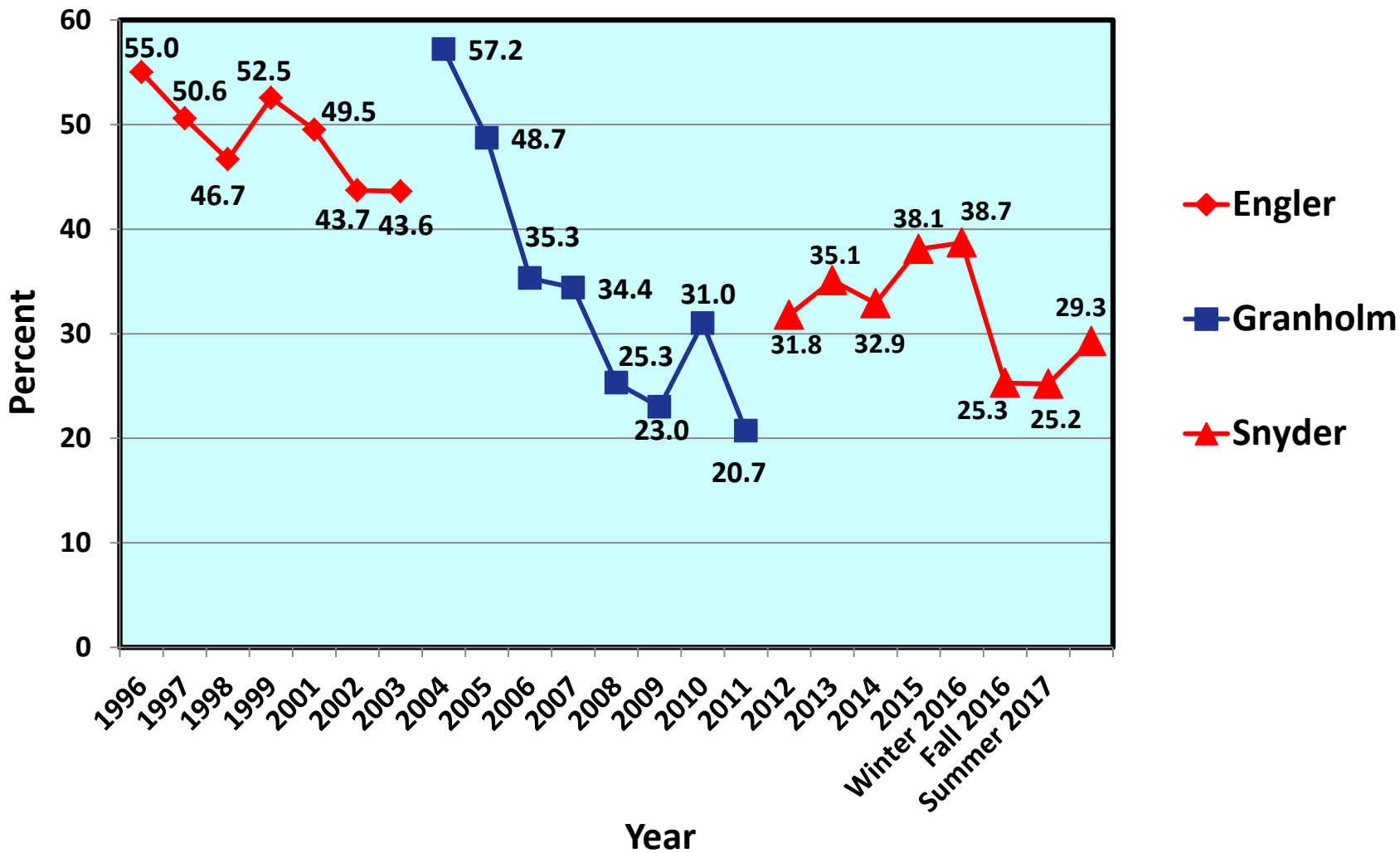
Michigan Residents' Ratings of Governor Snyder's Performance, Summer 2017



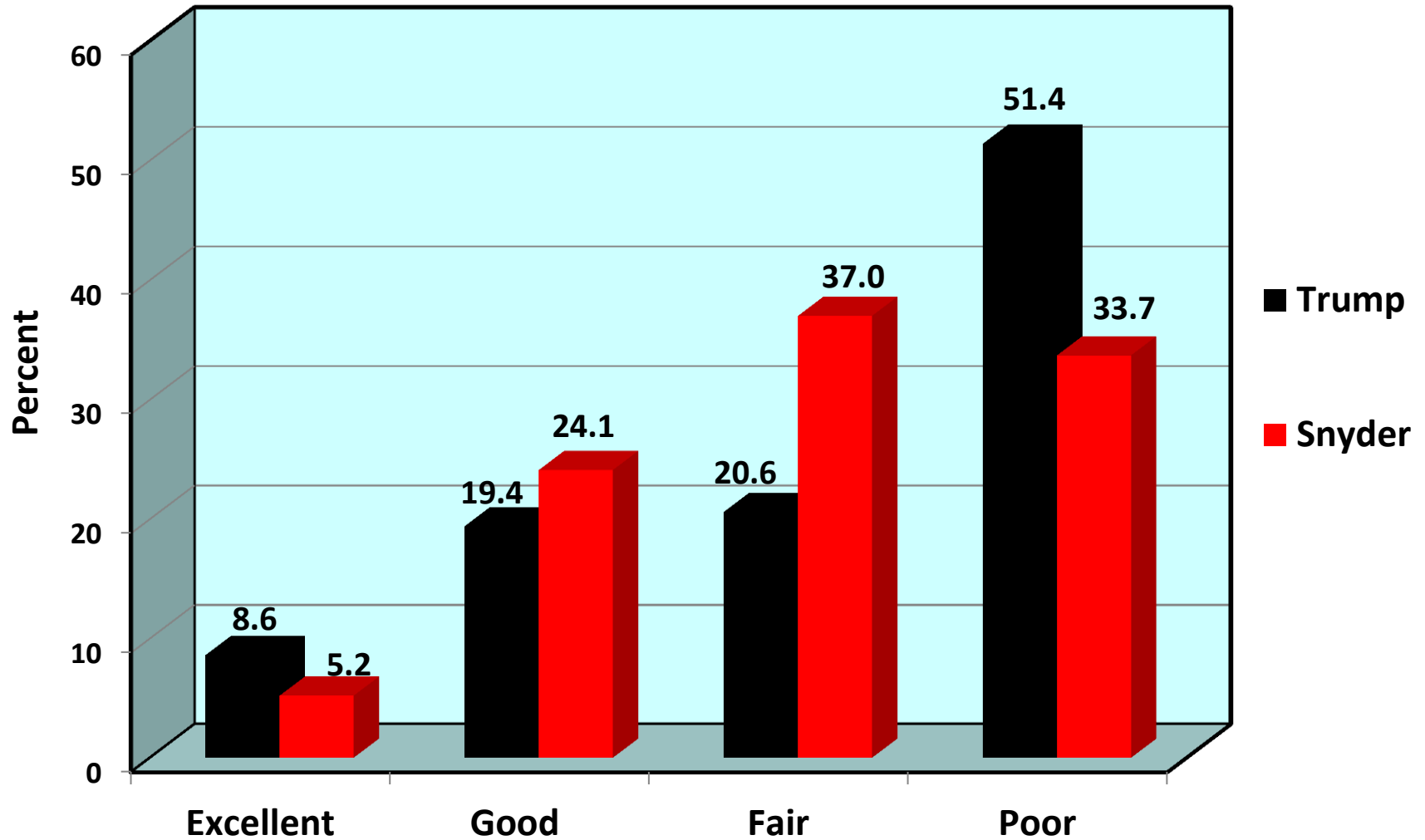
Percentage of Michigan Residents Rating Governor Snyder's Performance as "Excellent" or "Good," 2011-2017



Percentage of Michigan Residents Rating Performance of Governors as "Excellent" or "Good," 1995-2016



Michigan Residents' Ratings of the Performances of President Trump and Governor Snyder, Summer 2017





Attitudes by Race and Gender

Views of Michigan Residents by Race and Sex

	State of Michigan	Women	Men	Whites	Blacks
Trump “Excellent” or “Good”	28.0%	22.8%	33.3%	31.1%	7.7%
Snyder “Excellent” or “Good”	29.3%	26.2%	32.5%	31.6%	12.2%

Attitudes by Political Party



Views of Michigan Residents by Political Party

	State of Michigan	Republican	Independent	Democrat
Trump “Excellent” or “Good”	28.0%	69.3%	28.4%	2.7%
Snyder “Excellent” or “Good”	29.3%	57.4%	31.8%	9.2%

Regional Attitudes

A large, faint, light-colored Spartan helmet logo is centered in the background of the slide. The helmet features a crest with a sunburst pattern on top and a plume on the right side.

Views of Residents from Different Regions in Michigan

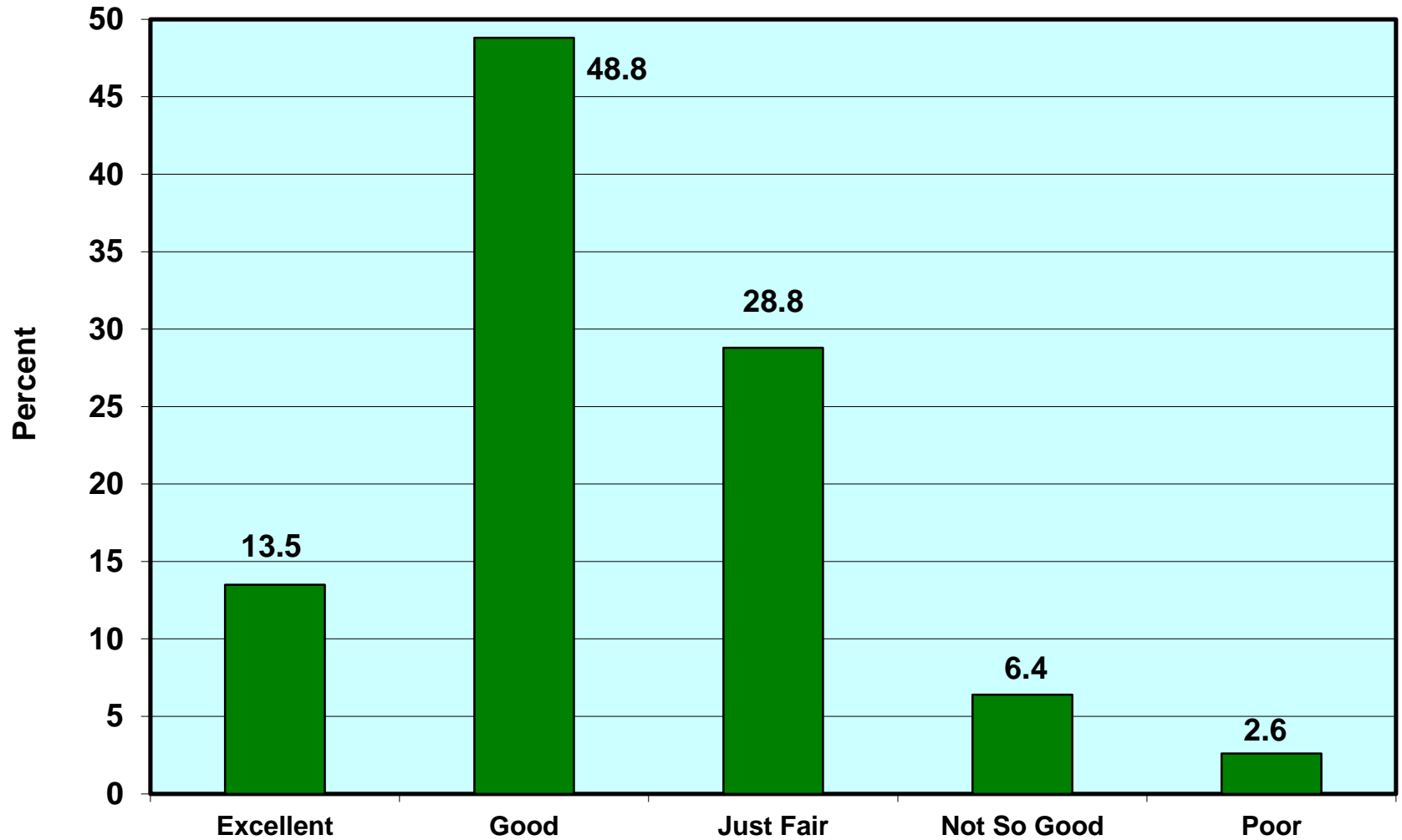
	State of Michigan	City of Detroit	Wayne, Oakland, Macomb	Grand Rapids Area*
Trump “Excellent” or “Good”	28.0%	14.7%	28.0%	29.8%
Snyder “Excellent” or “Good”	29.3%	14.4%	31.6%	26.7%

* Allegan, Barry, Ionia, Kent, Montcalm, Muskegon, Newaygo, and Ottawa Counties

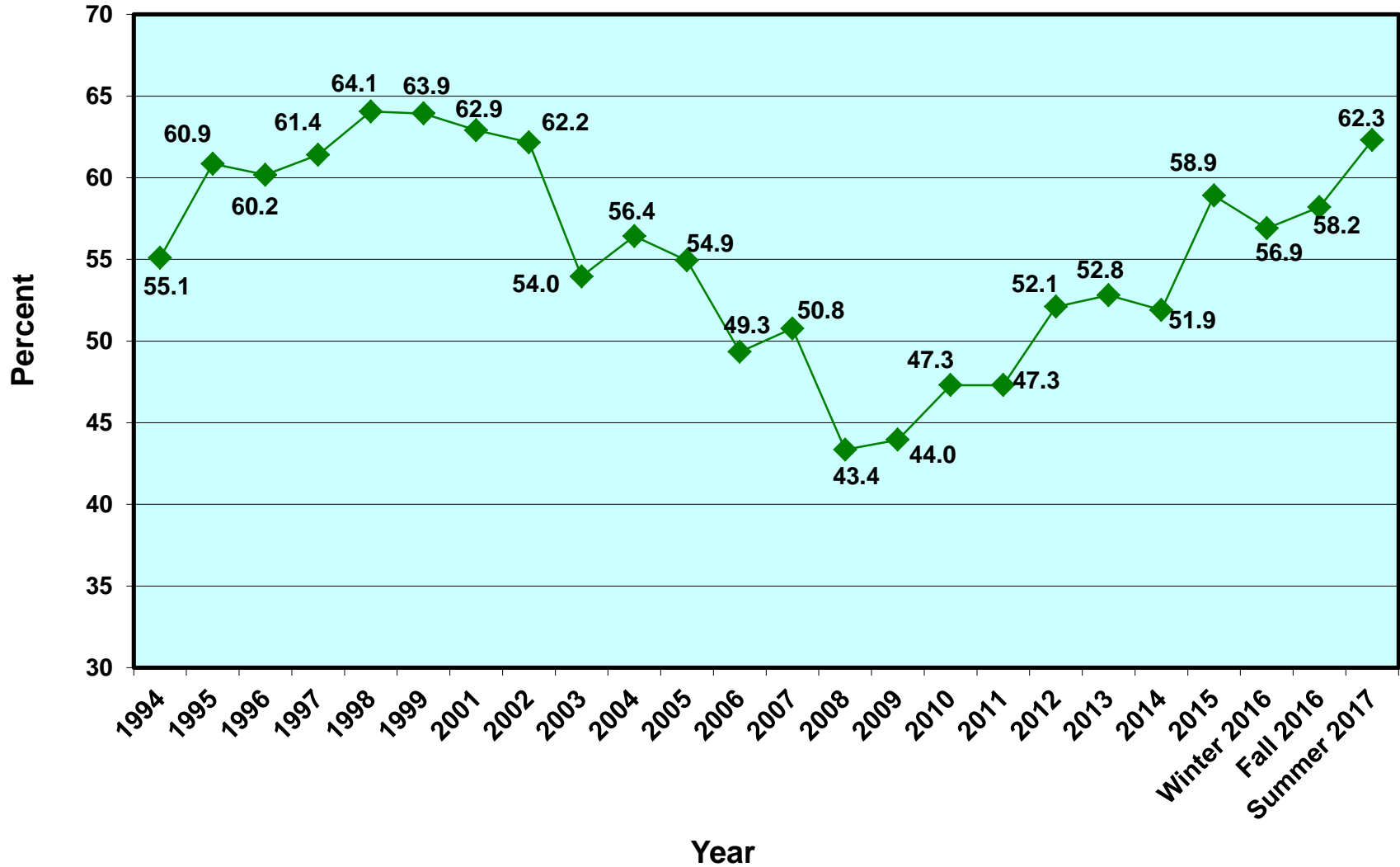
Assessments of the current financial situation continued the upward trend of the last 8 years.

The percentage saying “excellent” or “good” rose to its highest level since 2002.

Michigan Residents' Assessments of Their Current Financial Situation, Summer 2017

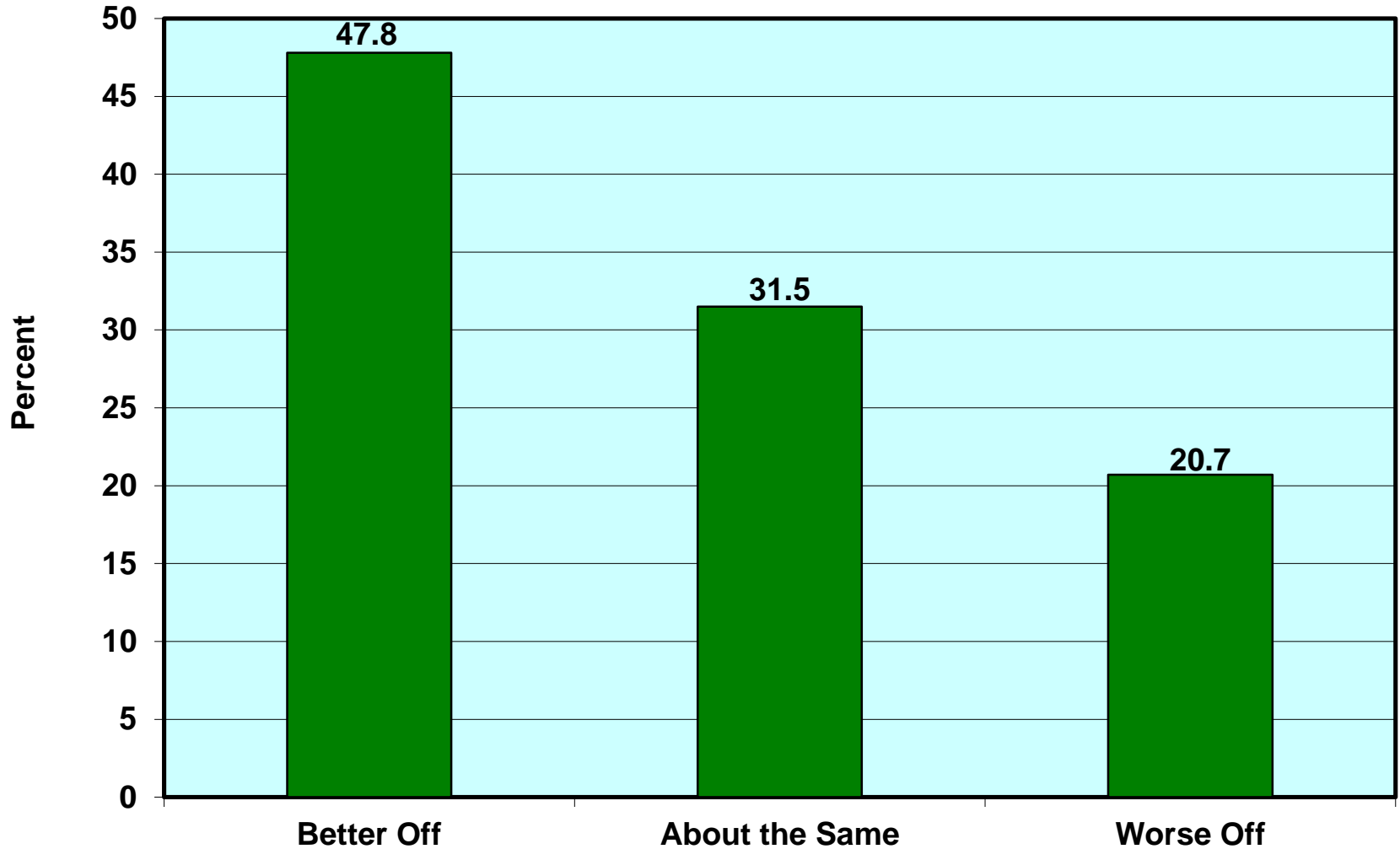


Percent of Michigan Residents Who Rate Their Current Financial Situation As "Excellent" or "Good," 1994-2017

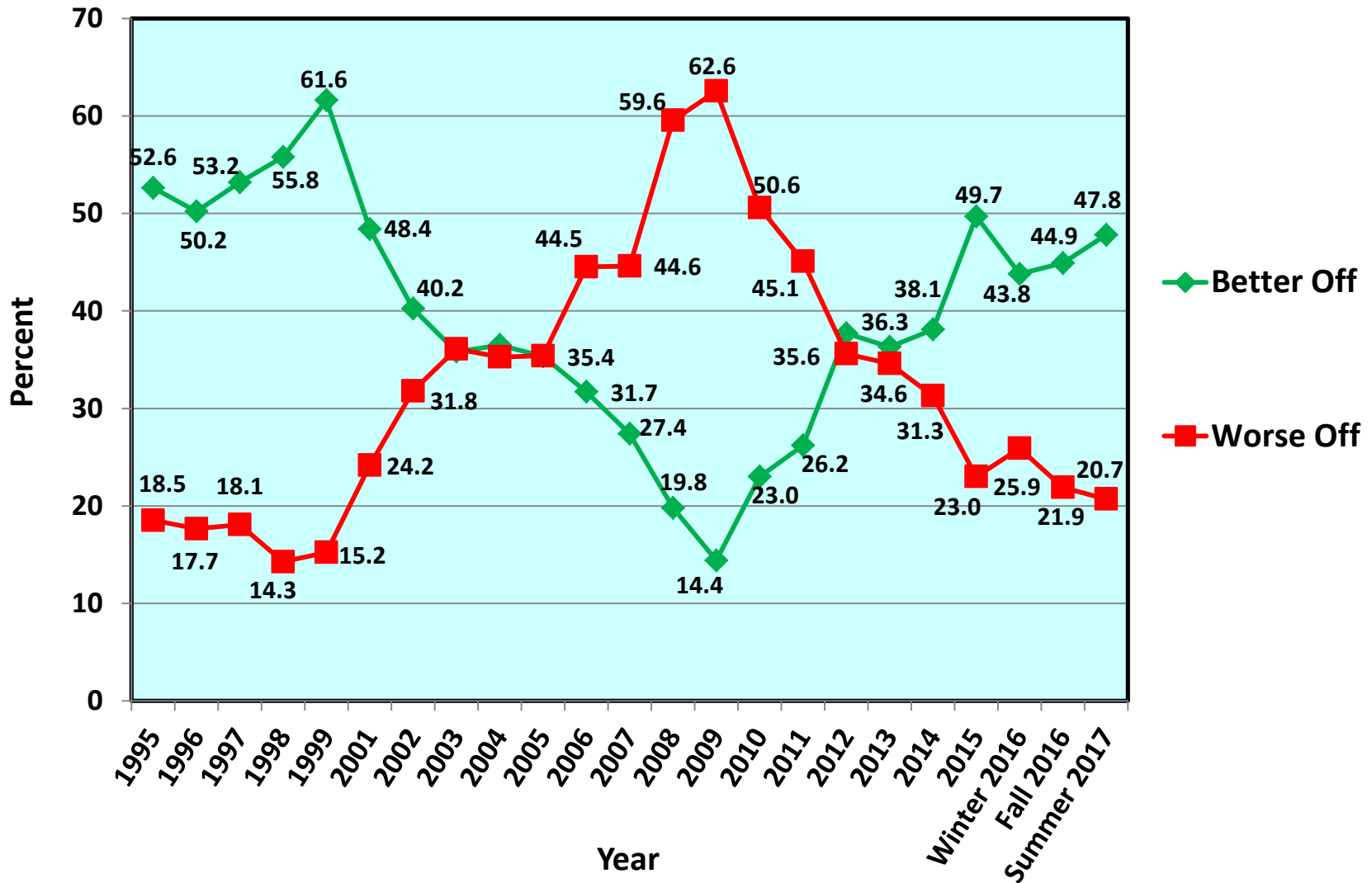


When asked whether they are *better off than one year ago*, Michigan residents gave ratings that were slightly better than in the previous round.

Michigan Residents' Beliefs About Whether They Are Better Off Than One Year Ago, Summer 2017

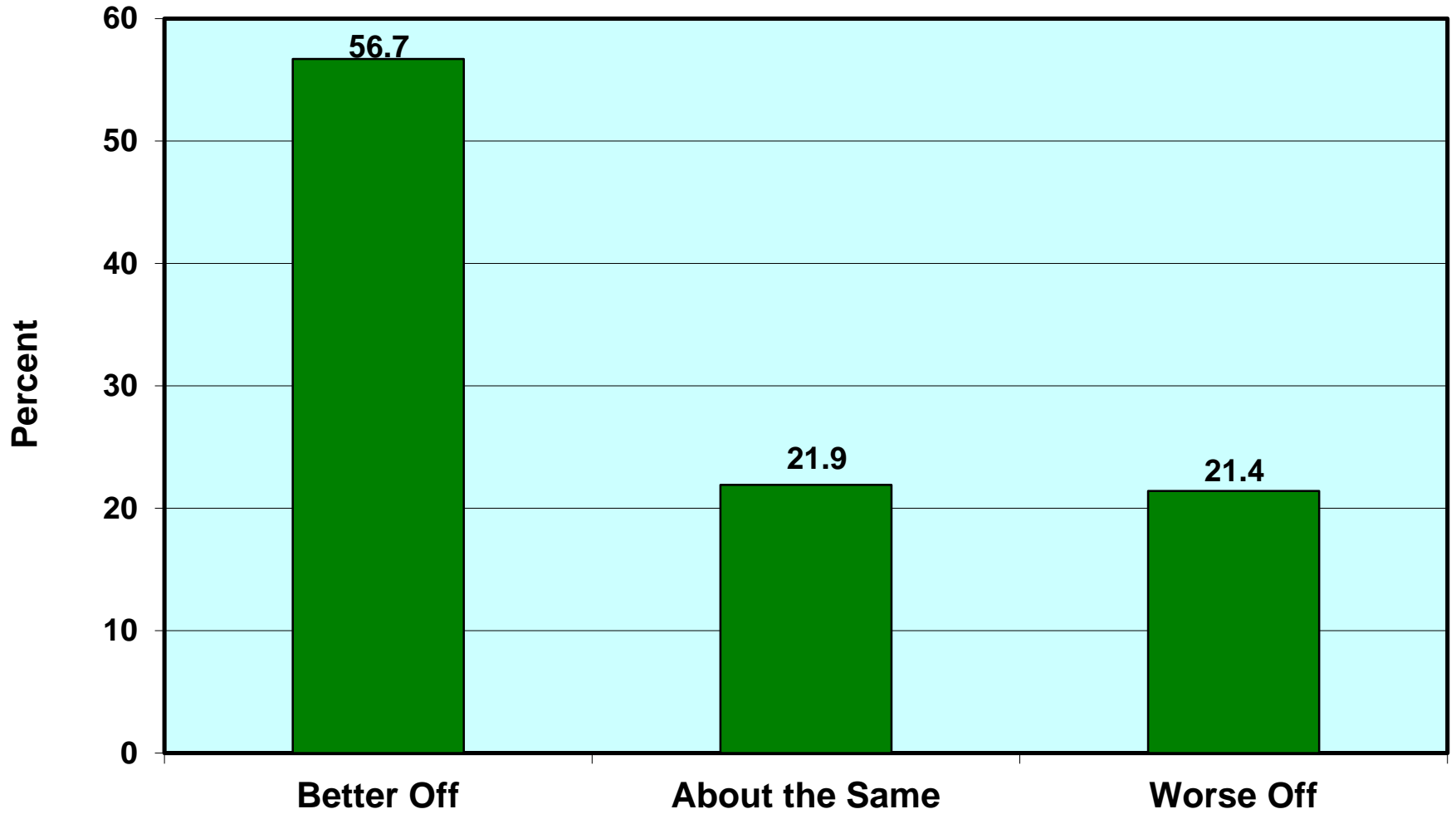


Michigan Residents' Beliefs About Whether They Are Better Off or Worse Off Than One Year Ago, 1995-2017

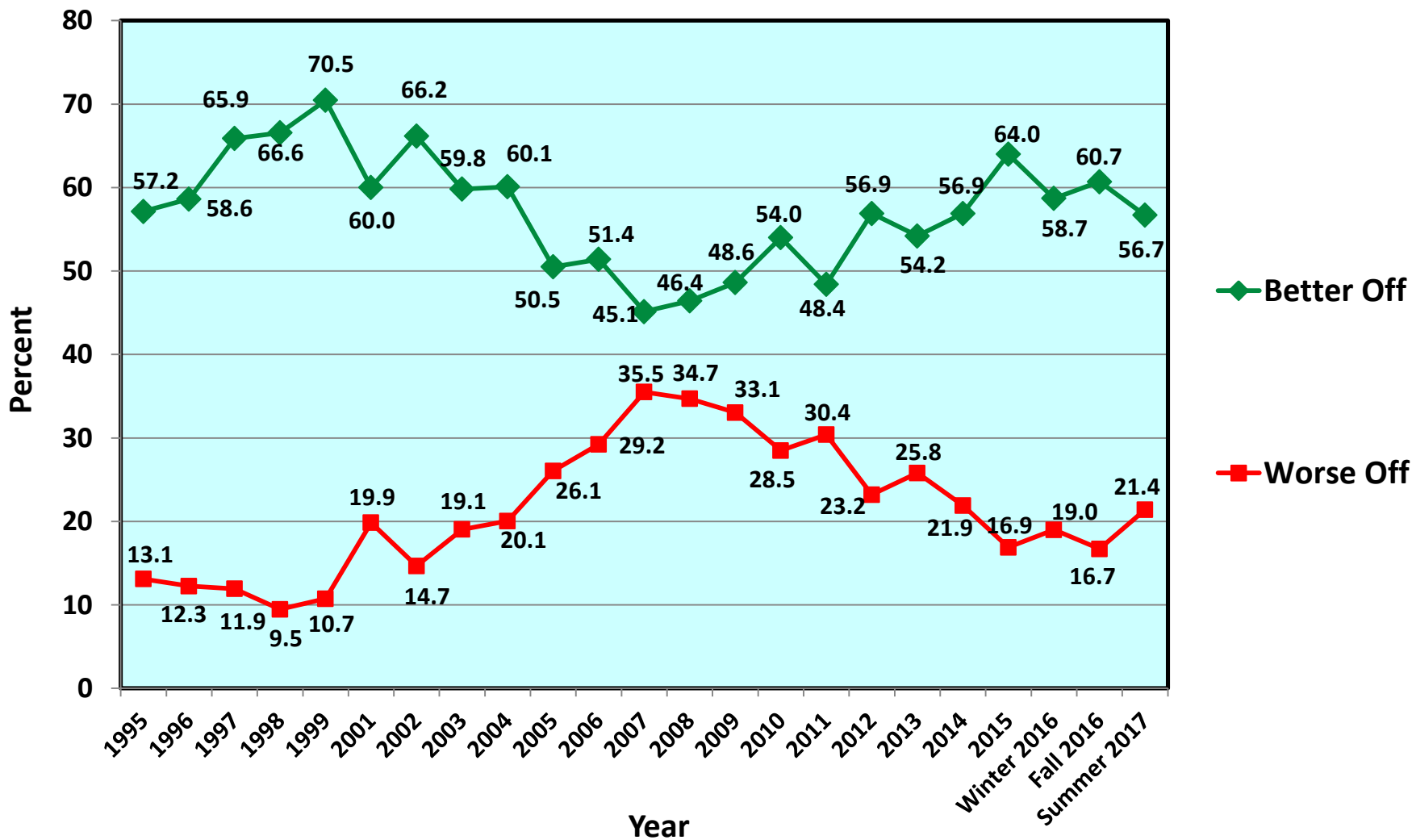


Michigan residents' assessment of whether they will be *better off one year from now* declined somewhat from the previous survey.

Michigan Residents' Beliefs About Whether They Will Be Better Off One Year From Now, Summer 2017



Michigan Residents' Beliefs About Whether They Will Be Better Off One Year From Now, 1995-2017



For all three of these measures of consumer confidence, the ratings are much better than in 2006-2011, but still lower than in 1999.

Reports of current financial situation, for different groups of Michigan residents:

	<u>“Excellent” or “Good”</u>	<u>“Not So Good” or “Poor”</u>
State of Michigan	62.3%	8.9%
Men	63.9	7.9
Women	60.7	9.9
White	65.4	8.6
Black	39.1	13.0

Reports of current financial situation, for different groups of Michigan residents:

	<u>“Excellent” or “Good”</u>	<u>“Not So Good” or “Poor”</u>
State of Michigan	62.3%	8.9%
Republican	78.9	2.7
Independent	61.7	8.1
Democrat	55.7	13.0
Income Above \$100K	85.4	1.6
Income \$50K - \$100K	72.4	4.4
Income \$20K - \$50K	43.4	14.0
Income Below \$20K	23.7	28.9

Reports of current financial situation, for different groups of Michigan residents:

	“Excellent” or “Good”	“Not So Good” or “Poor”
State of Michigan	62.3%	8.9%
Aged 65 and Over	69.7	6.2
Aged 30-64	59.8	11.4
Aged 18-29	63.9	3.1
City of Detroit	59.4	12.7
Wayne, Oakland, Macomb	63.6	17.7
Grand Rapids Area	67.1	5.7

How to Learn More about SOSS:

<http://ippsr.msu.edu/SOSS/>

Charles Ballard: **ballard@msu.edu**
517.353.2961

Matt Grossmann: **grossm63@msu.edu**
517.884.8640

Cynthia Kyle: **kylec@msu.edu**
517.353.1731

Graham Pierce: **gpierce@msu.edu**
517.884.0364



THANK YOU!

MICHIGAN STATE
UNIVERSITY

Institute for Public Policy
and Social Research
State of the State Survey