

State of the State Survey Winter-Spring 2011

**Snyder Gets Mixed Reviews;
Consumer Confidence Continues to Rise**

State of the State Survey

Winter-Spring 2011

Charles L. Ballard

Professor, Department of Economics

Director, State of the State Survey

Institute for Public Policy and Social Research

ballard@msu.edu

517-353-2961

About SOSS Wave 58

979 Interviews Completed

February 12, 2011 to March 29, 2011

Margin of Error: $\pm 3.1\%$

Survey Demographics

48% Male

52% Female

83.3% White

14.2% African-American

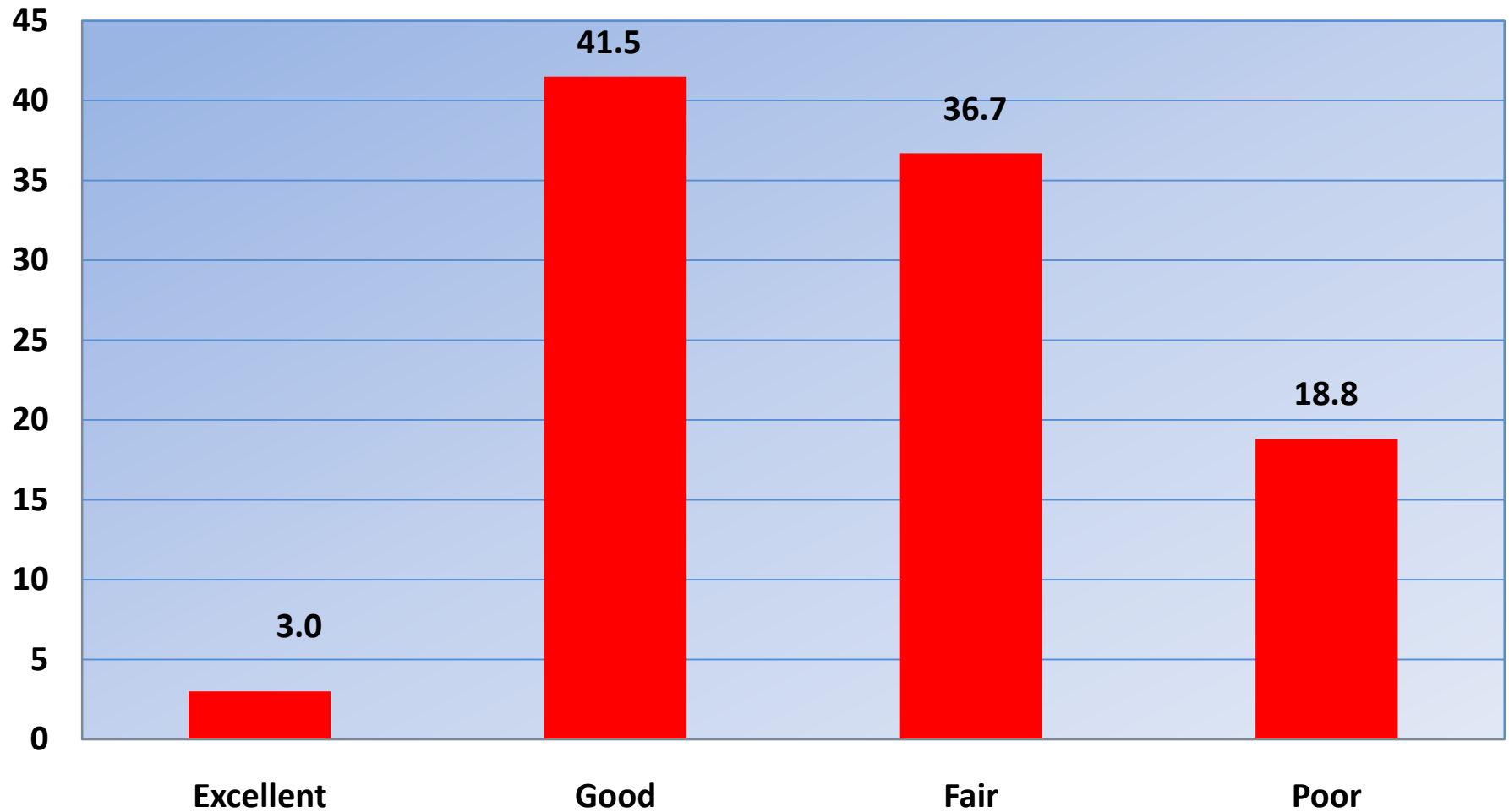
34.9% Democrat

21.9% Republican

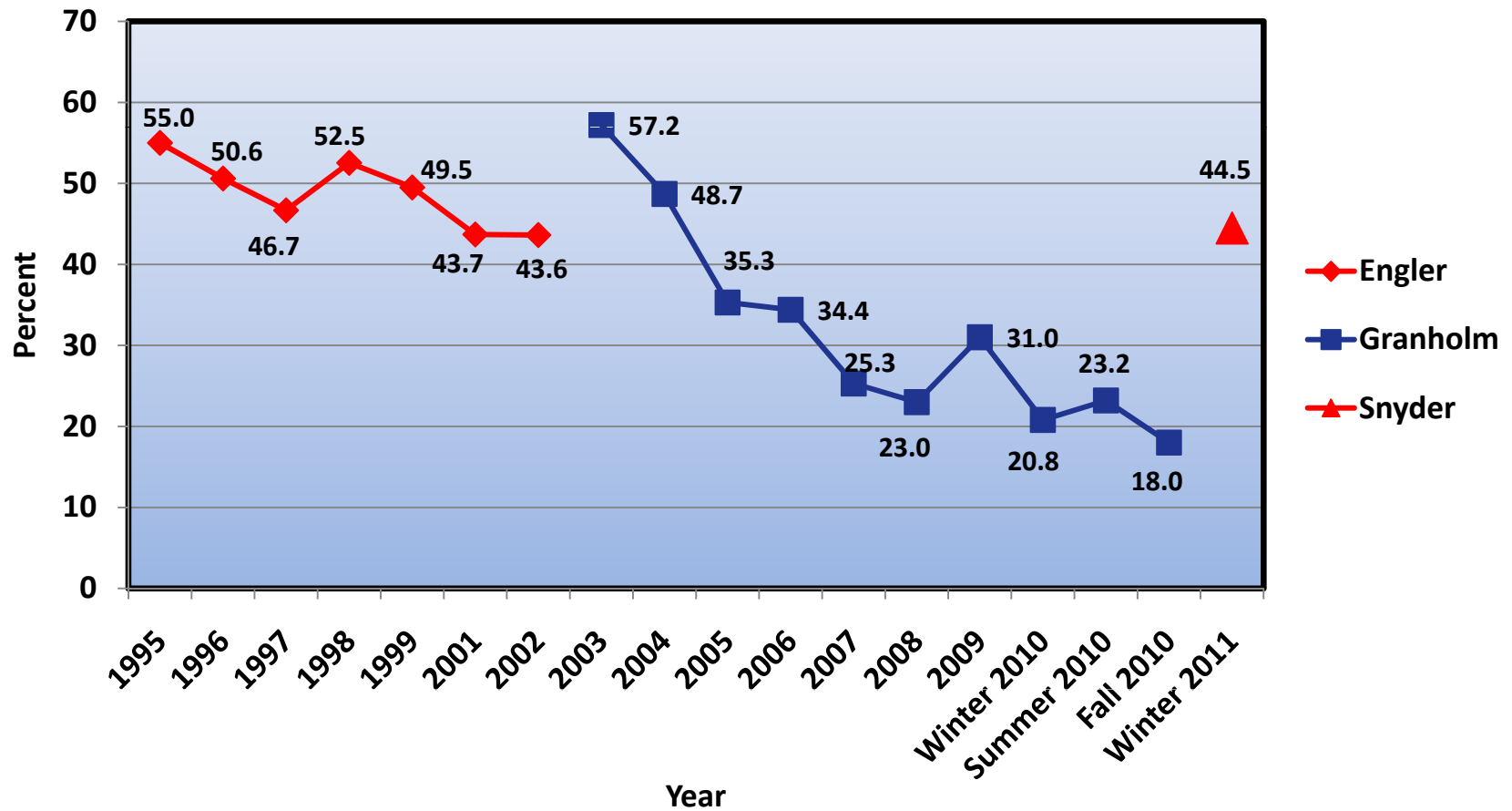
32.5% Independent

Governor's Approval Ratings

**Michigan Residents' Ratings of Governor Snyder's Performance,
Winter-Spring 2011**



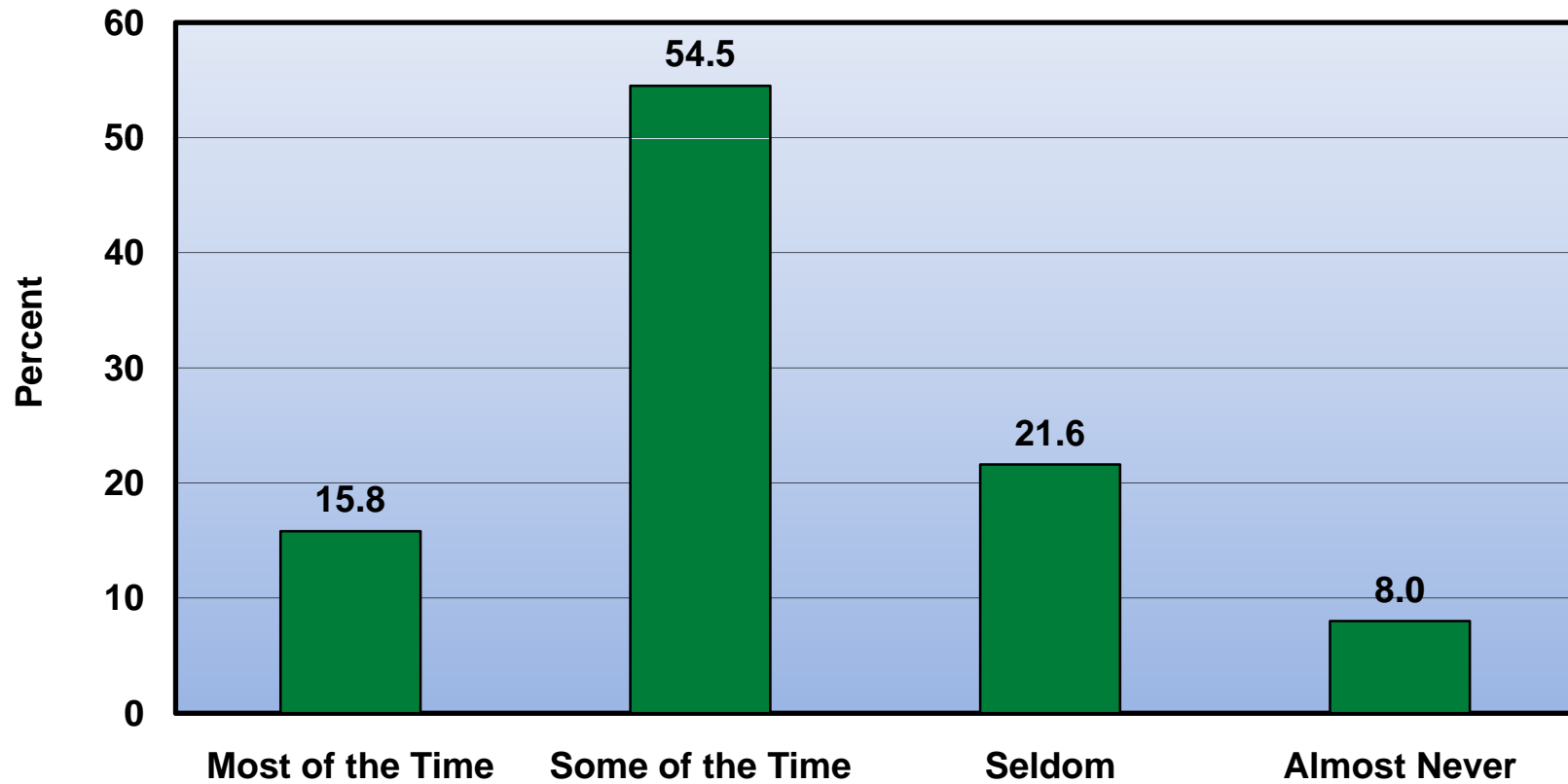
Percentage of Michigan Residents Rating Performance of Governors as "Excellent" or "Good," 1995-2011



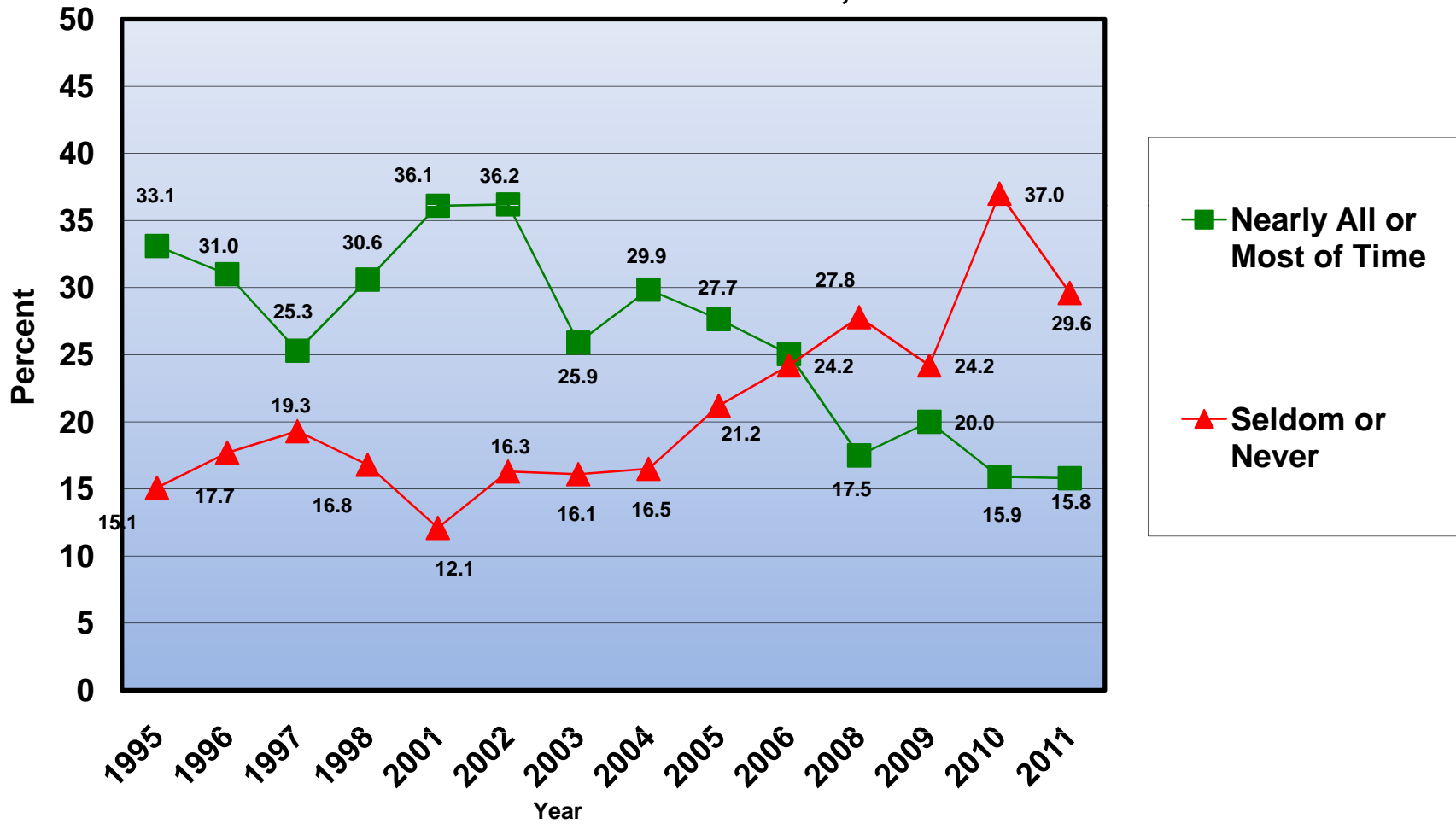
- Overall, about 22% of respondents said they did not know enough to give a rating to Governor Snyder.
- Before the budget proposal was released, 32% did not give a rating. Of those who did, 54% said “Excellent” or “Good”.
- After the budget proposal, 18% did not give a rating. Of those who did, 39% were favorable.

Trust in Government

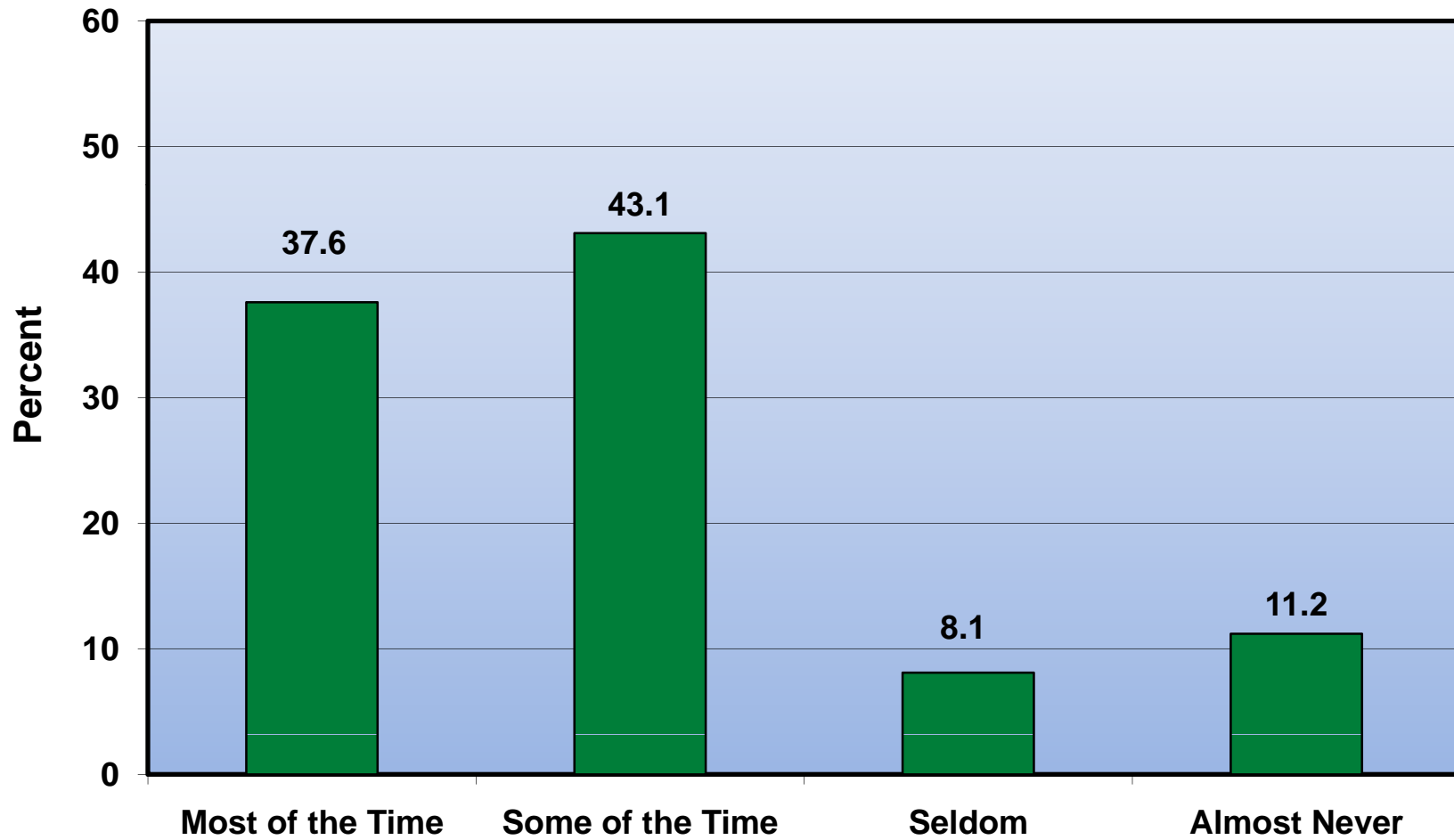
Michigan Residents' Opinions of How Often They Can Trust the State Government, Winter-Spring 2011



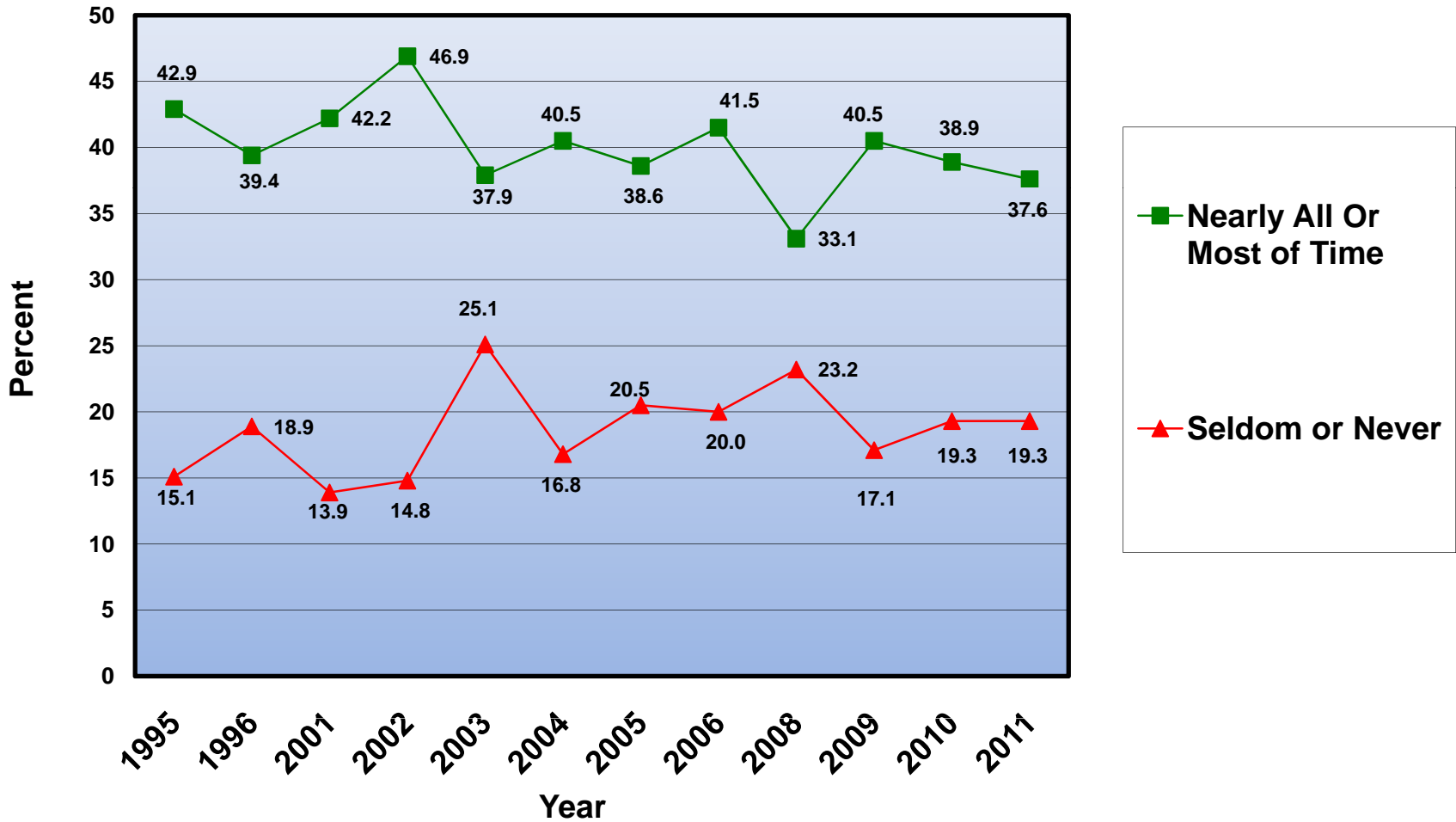
Michigan Residents' Opinions of How Often They Can Trust the State Government, 1995-2011



Michigan Residents' Opinions of How Often They Can Trust Local Government, Winter-Spring 2011

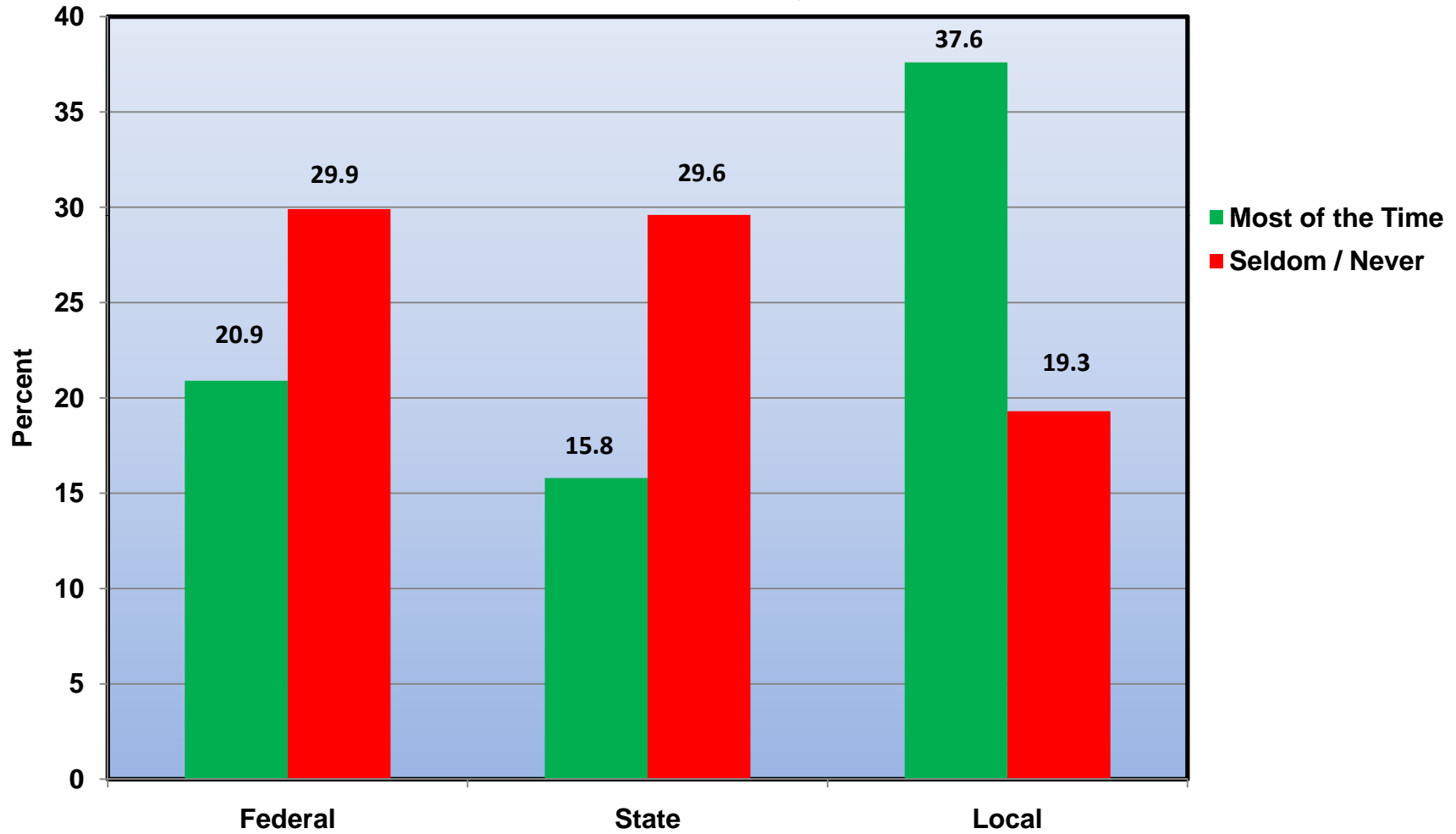


Michigan Residents' Opinions of How Often They Can Trust Local Government, 1995-2011



The Percentage Saying They Trust State Government Nearly All or Most of the Time Is At an All-Time Low

Michigan Residents' Opinions of How Often They Can Trust Different Levels of Government, Winter-Spring 2011



Most Important Issues for Governor and Legislature

Most Important Problems Facing the Governor and the Legislature (Winter-Spring 2011)

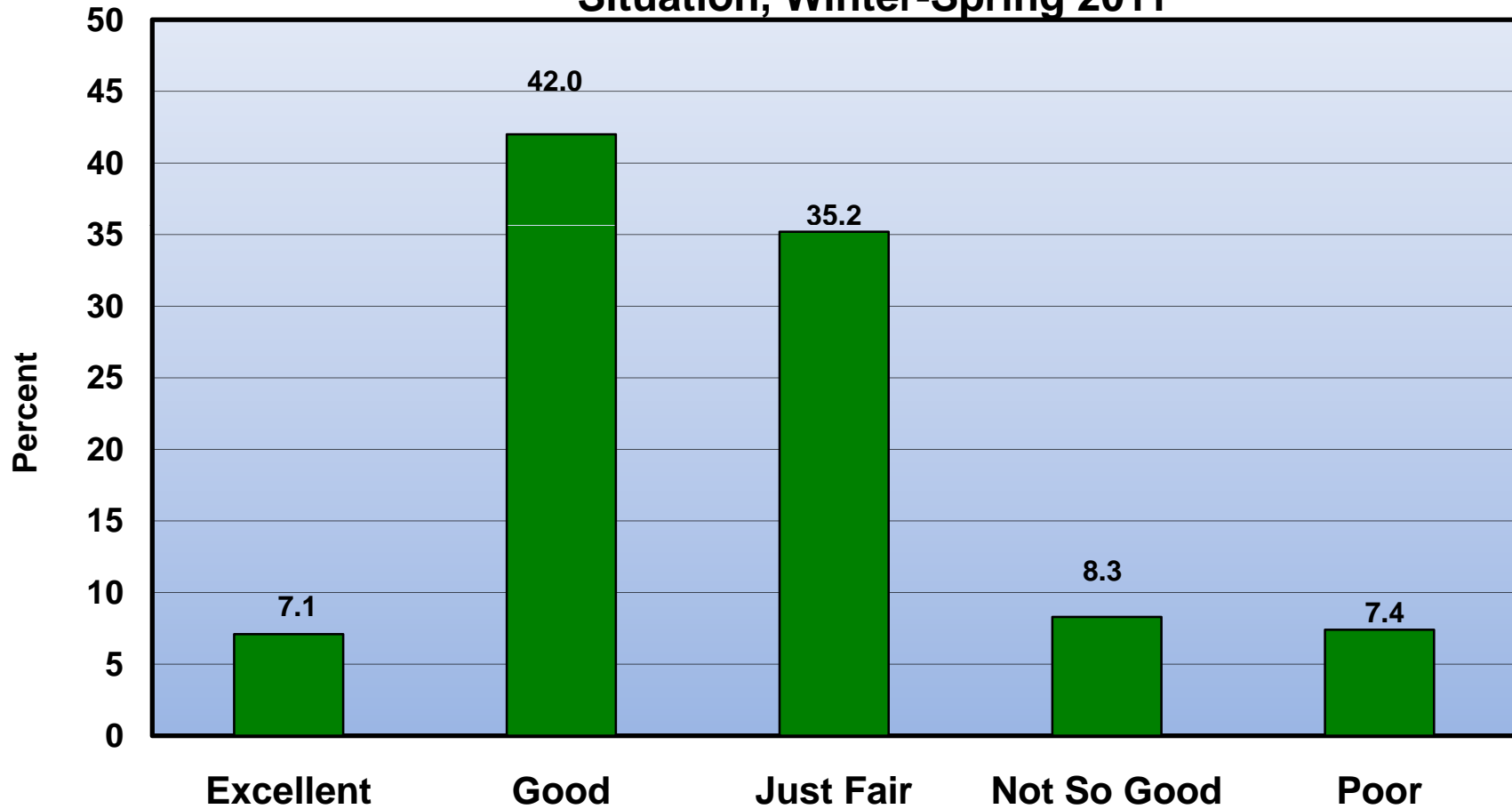
Jobs / Unemployment / Work / Wages	45.4%
Economic Growth / Stimulating the Economy	14.1
Education Quality / Education Standards	9.4
School Funding / School Finances	6.6
Health Care / Health Insurance	4.7
Reduce Size of Government	4.6
Taxes / Reduce Taxes	3.5
Prescription Drug Coverage	2.5
Regulation / Deregulation	2.5
Solve Budget Issues	1.8

**Most Important Problems
Facing Governor and Legislature, 2001-2011
(In Percent)**

	<u>2001</u>	<u>2003</u>	<u>2005</u>	<u>2007</u>	<u>2009</u>	<u>2011</u>
Jobs / Unemployment	6.6	22.0	30.2	40.8	57.1	45.4
Economic Growth / Stimulating Economy	3.9	19.3	14.3	17.5	20.3	14.1
Education Quality / School Finances	41.7	27.5	20.7	11.4	7.1	16.0
Health Care / Health Insurance	7.4	7.0	9.4	4.3	4.4	4.7

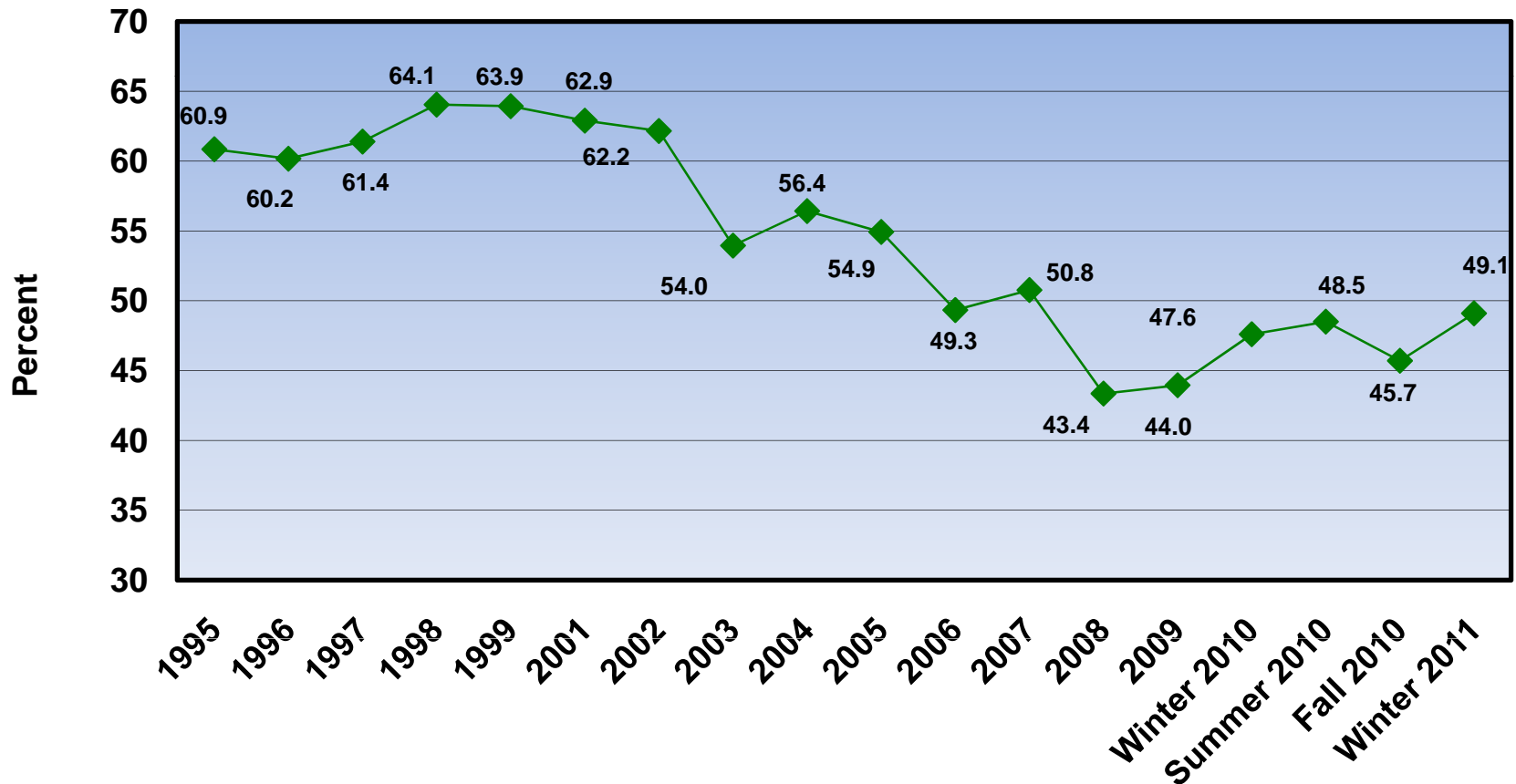
Consumer Confidence Continues Its Slow But Steady Rise

Michigan Residents' Assessments of Their Current Financial Situation, Winter-Spring 2011

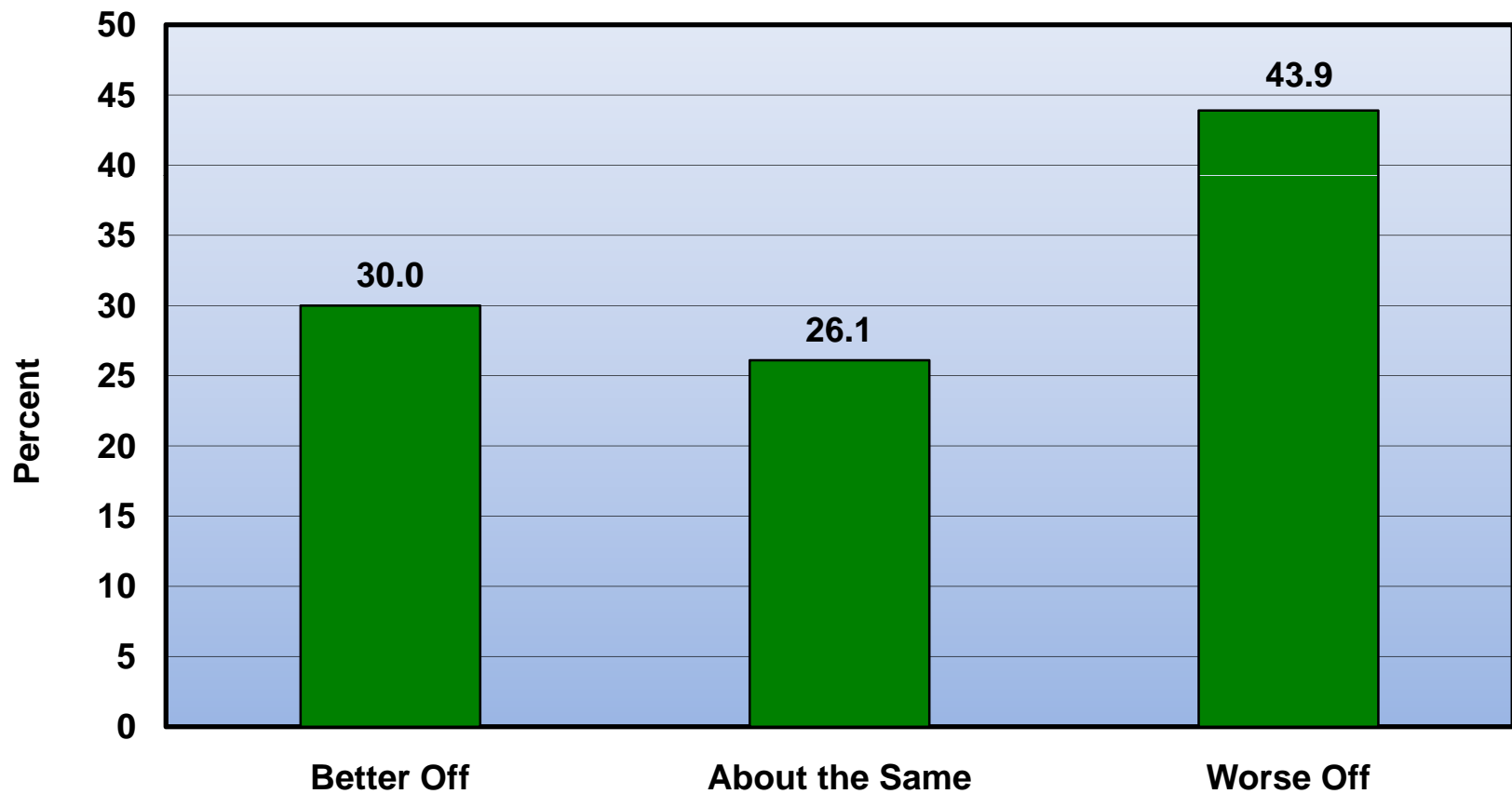


Current Situation: Best Since Fall 2007

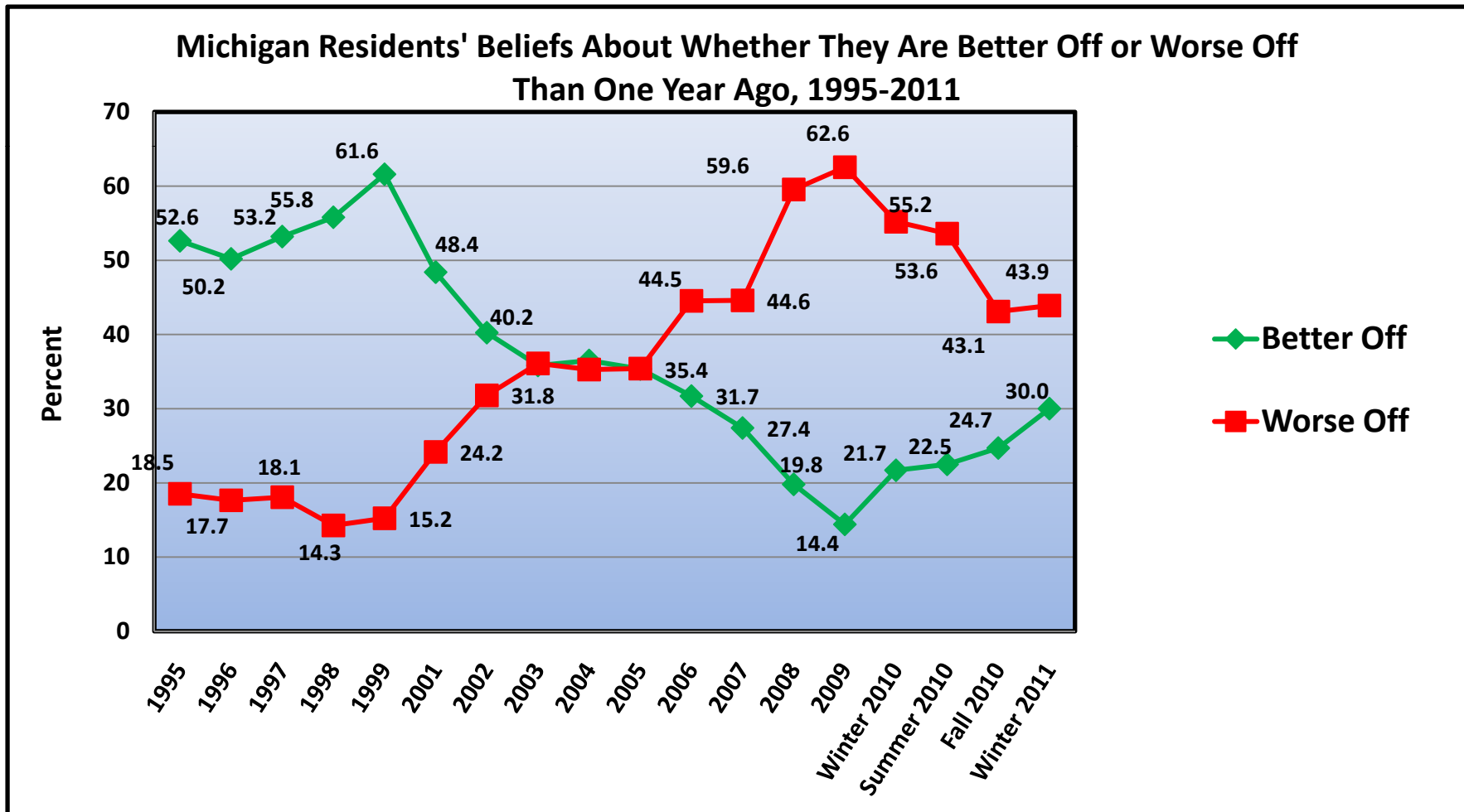
Percent of Michigan Residents Who Rate Their Current Financial Situation As "Excellent" or "Good", 1995-2011



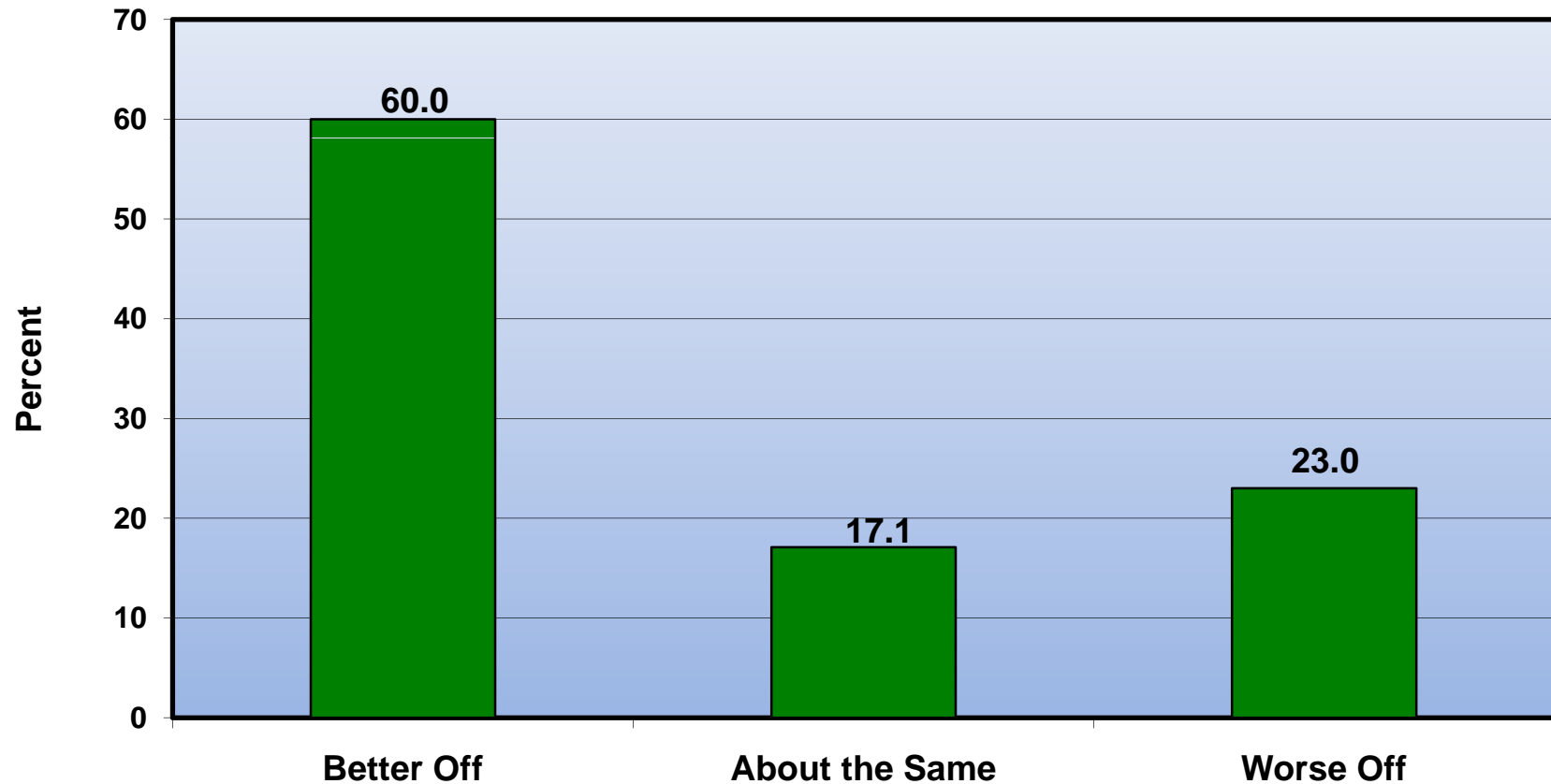
Michigan Residents' Beliefs About Whether They Are Better Off Than One Year Ago, Winter-Spring 2011



Better Off Than One Year Ago: Best Since Fall 2006

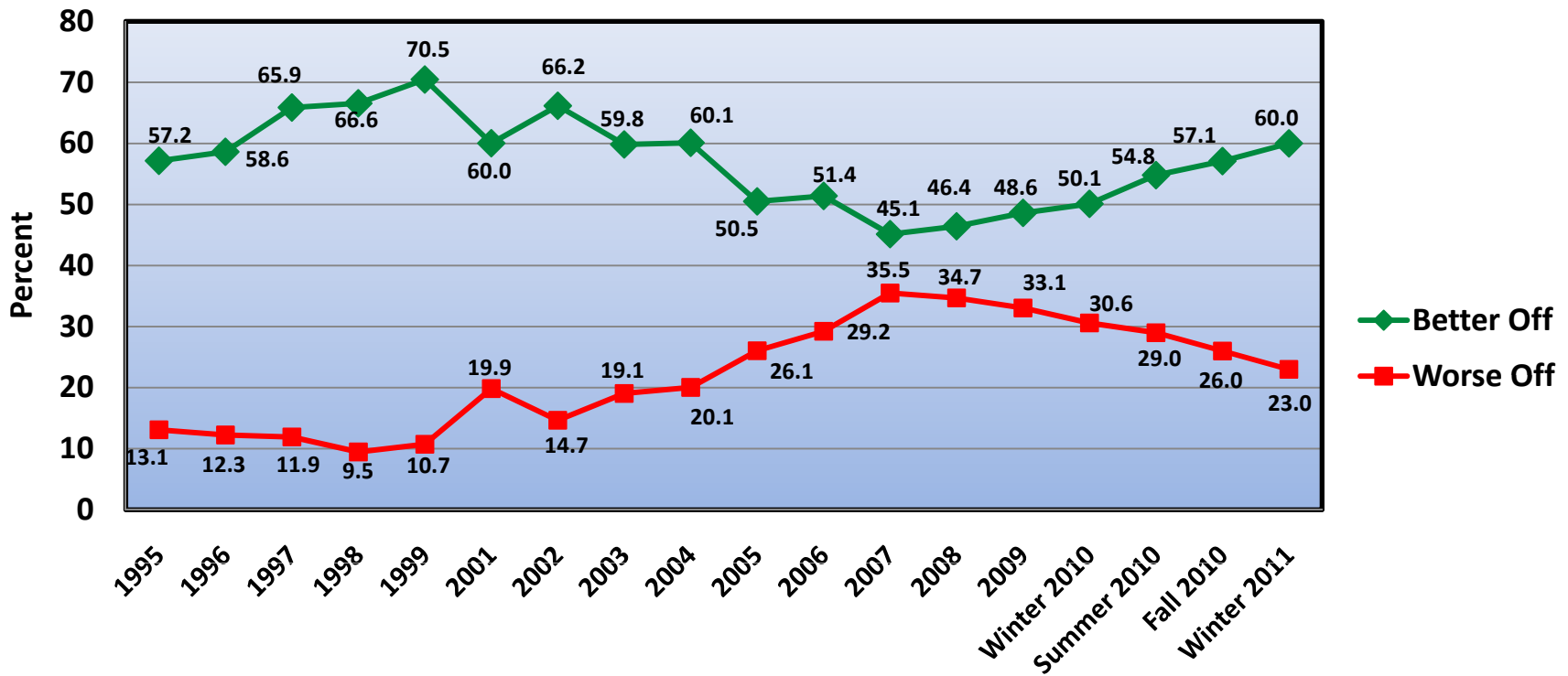


Michigan Residents' Beliefs About Whether They Will Be Better Off One Year From Now, Winter-Spring 2011



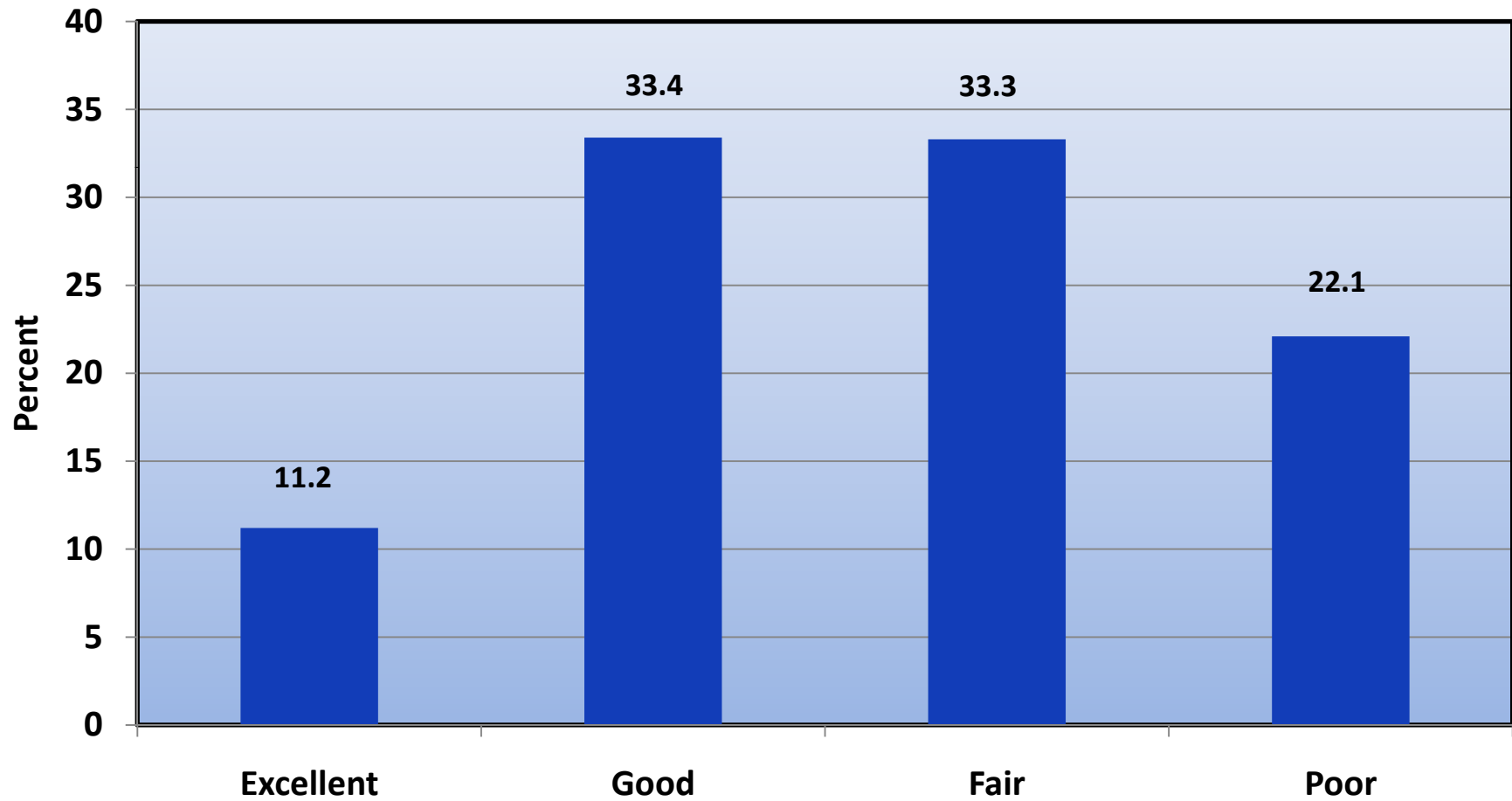
Better Off One Year From Now: Best Since Fall 2004

Michigan Residents' Beliefs About Whether They Will Be Better Off
 One Year From Now, 1995-2011

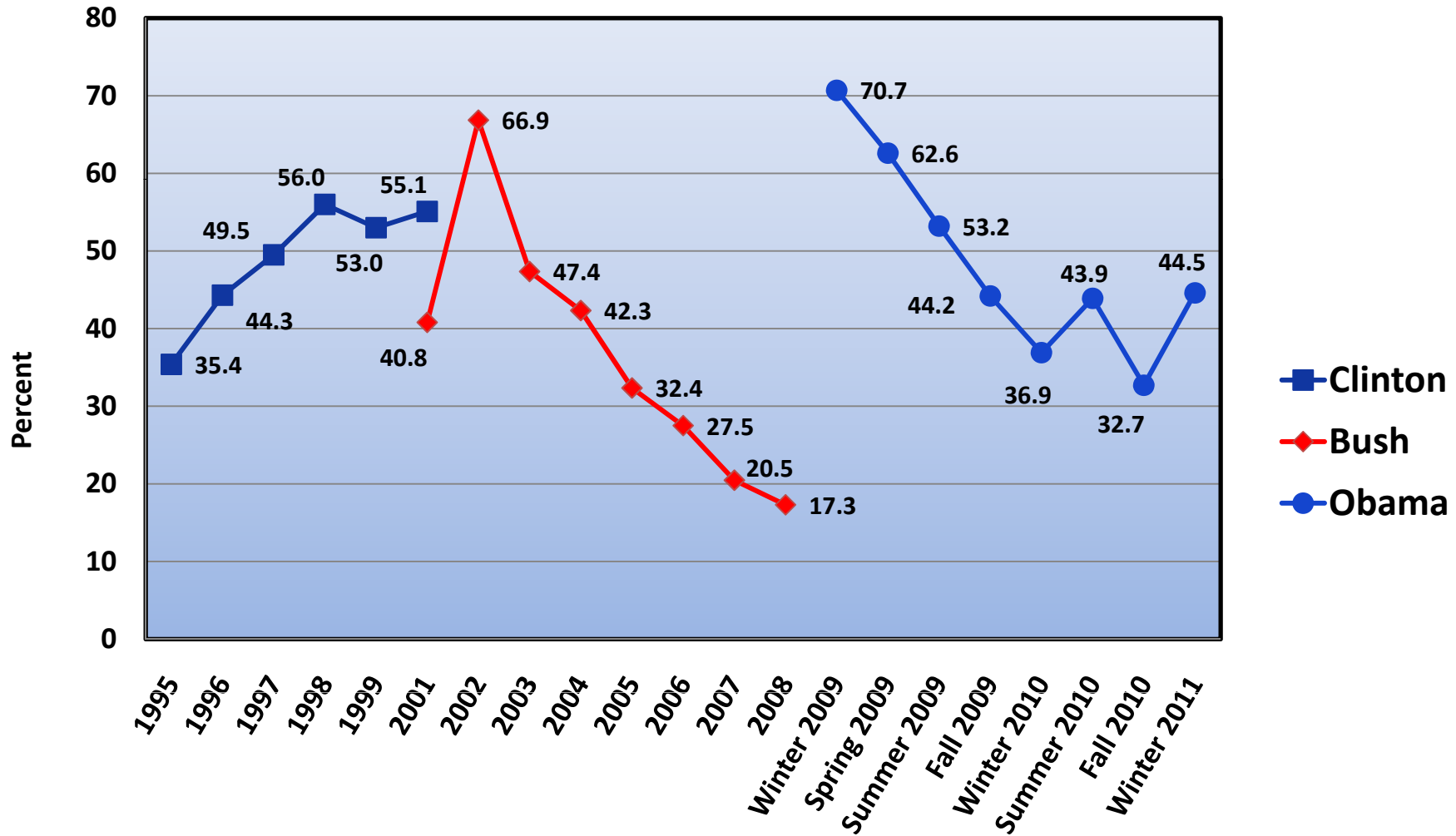


President's Approval Ratings

Michigan Residents' Ratings of President Obama's Performance, Winter-Spring 2011



Percentage of Michigan Residents Rating
 U.S. President's Performance as
 "Excellent" or "Good", 1995-2011



Regional Attitudes

Views of Residents from Different Regions in Michigan

	<u>State of Michigan</u>	<u>City of Detroit</u>	<u>Wayne, Oakland, Macomb</u>	<u>SEMCOG Region^a</u>	<u>Grand Rapids Area^b</u>	<u>Lansing Area^c</u>	<u>Upper Peninsula</u>
Obama "Excellent" or "Good"	44.5%	83.1%	58.2%	51.7%	31.4%	58.8%	46.7%
Snyder "Excellent" or "Good"	44.5%	36.5%	39.1%	43.7%	54.4%	37.6%	60.0%
Worse Off Than One Year Ago	43.9%	41.5%	45.1%	44.8%	40.5%	41.8%	34.4%

^a Livingston, Macomb, Monroe, Oakland, St. Clair, Washtenaw, and Wayne Counties

^b Allegan, Barry, Ionia, Kent, Montcalm, Muskegon, Newaygo, and Ottawa Counties

^c Clinton, Eaton, and Ingham Counties

Attitudes by Race and Gender

Views of Michigan Residents By Race and Sex

	<u>State of Michigan</u>	<u>Women</u>	<u>Men</u>	<u>Whites</u>	<u>Blacks</u>
Obama "Excellent" or "Good"	44.5%	51.1%	37.4%	36.8%	91.8%
Snyder "Excellent" or "Good"	44.5%	45.3%	43.6%	43.7%	49.8%
Worse Off Than One Year Ago	43.9%	40.0%	48.2%	45.3%	34.4%

Attitudes by Political Party

Views of Michigan Residents By Political Party

	<u>State of Michigan</u>	<u>Republican</u>	<u>Independent</u>	<u>Democrat</u>	<u>Other</u>
Obama "Excellent" or "Good"	44.5%	17.9%	33.7%	77.6%	27.3%
Snyder "Excellent" or "Good"	44.5%	66.9%	29.8%	46.0%	40.3%
Worse Off Than One Year Ago	43.9%	38.7%	54.0%	32.8%	59.6%

MICHIGAN STATE UNIVERSITY

Institute for Public Policy and Social Research
State of the State Survey

THANK YOU.

MICHIGAN STATE
UNIVERSITY | Institute for Public Policy
and Social Research
State of the State Survey